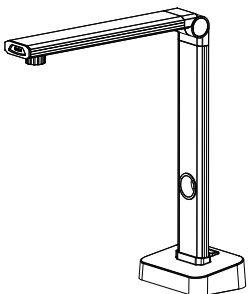


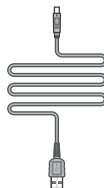
# Joy-CamScan L's Instruction Manual

Please confirm the attached

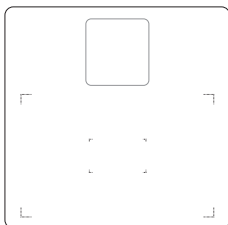
☐ Camera Scanner



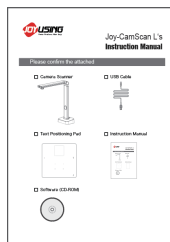
☐ USB Cable



☐ Text Positioning Pad



☐ Instruction Manual

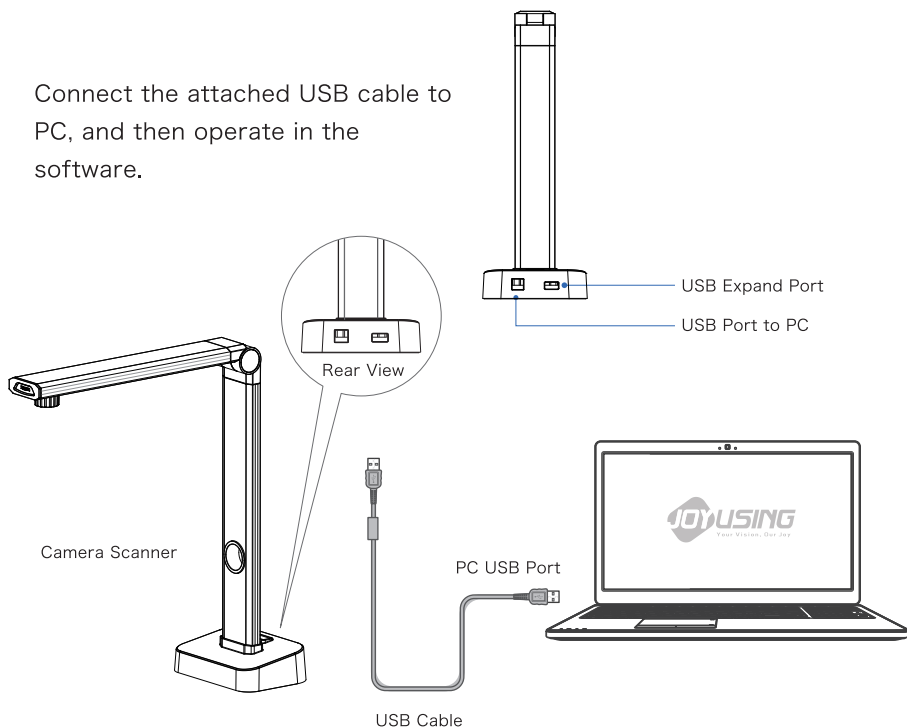


☐ Software (CD-ROM)



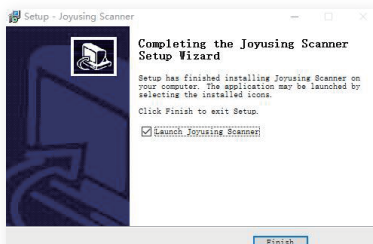
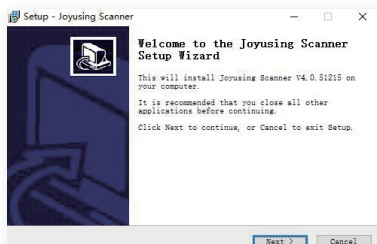
## Device connection

Connect the attached USB cable to PC, and then operate in the software.



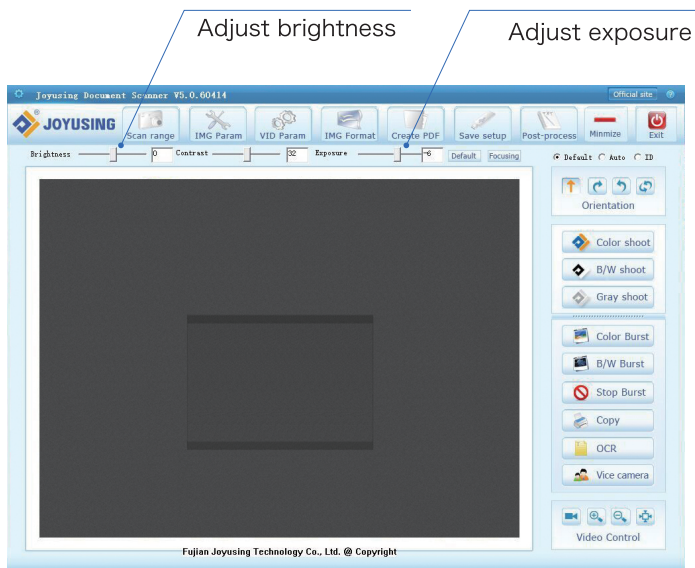
## Software installation

Double click “Joyusing Document scanner” software setup and follow the indications.

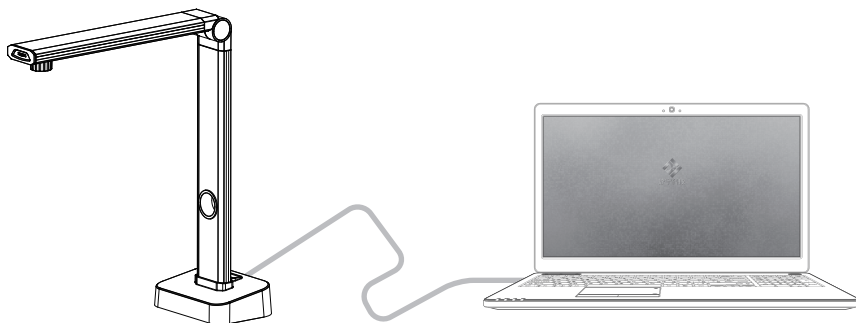


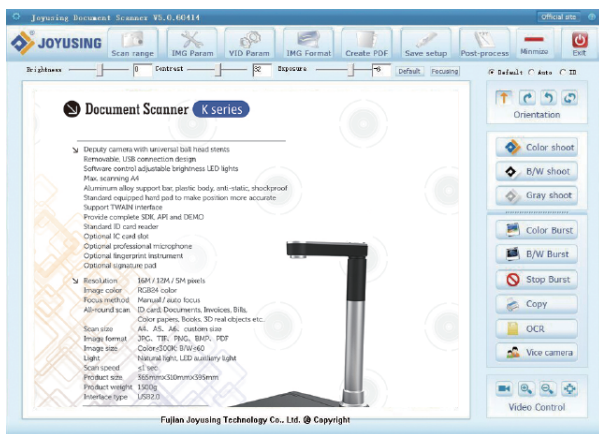
## Operation

Controlling through software UI  
get finer adjustment for LED light brightness.



## Start to operate





Double click "Jousing scanner" Icon, open the operation interface and put target object on pad . Then, click 'shoot' button to scan.



after-sale service



## Warranty Card

Address: \_\_\_\_\_

Email: \_\_\_\_\_

Zip Code: \_\_\_\_\_

Date of Purchase: \_\_\_\_\_

Number of Invoice: \_\_\_\_\_



## Qualification Certificate

QC \_\_\_\_\_

## Fujian Joyusing Technology Co., Ltd.

www.joyusing.com

Email: service@joyusing.com

Address: 3rd floor, the 21th building, Cangshan park, Juyuanzhou industrial zone, #618 Jinshan road, Cangshan district, Fuzhou Fujian, China (Cross-strait Youth Entrepreneurship Center)