

[Quick Start Guide](#) ▶

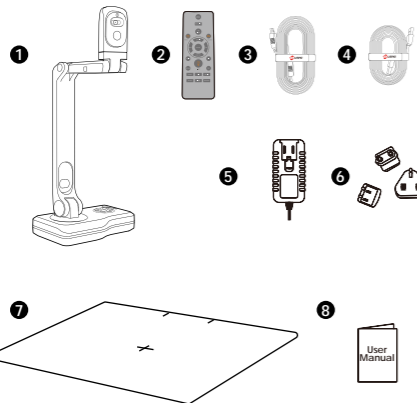


T h a n k s f o r p u r c h a s i n g .

Quick Start Guide

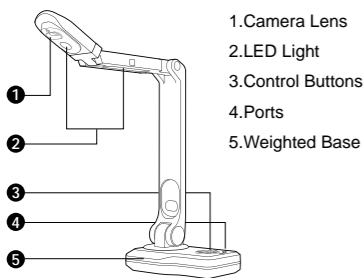
V500W Document Camera

1 List of Accessories

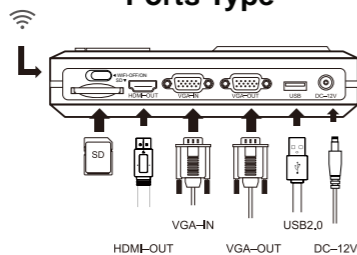


1. Document Camera
2. Remote Controller
3. HDMI Cable
4. USB2.0 Cable
5. DC Adapter 12V1A
6. Interface Converter(optional)
7. Soft Mat
8. User Manual
9. Quick Guide

2 Operating Instructions

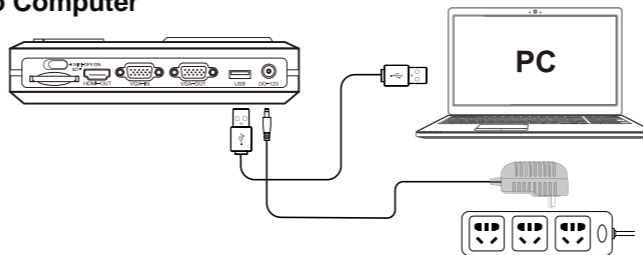


Ports Type



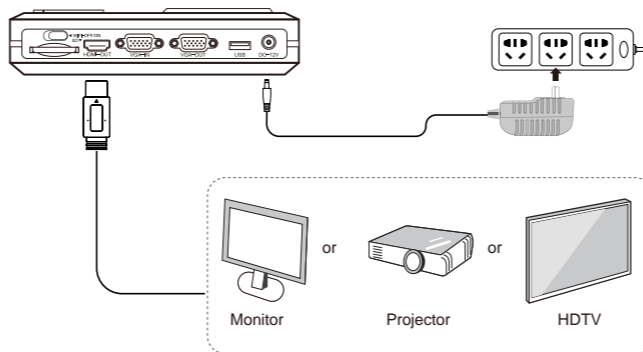
3 Installation and Connection

USB to Computer



1. Plug in the power adapter to the power socket and Document Camera.
2. Connect the USB cable to the PC and Document Camera.
3. Install the software.

Connect to a Projector, Monitor or HDTV (HDMI Mode)



HDMI cable can be connected to monitor, projector, HDTV, and touch screen, etc.

WiFi Connection



1. Make sure "WiFi-ON".
2. Visit the WiFi information at the bottom of the device.
3. Connect to **WiFi: JYV500W-XXXXXXX Password: 12345678**.

4 Download software

Online Store Download

Link to the website:
<https://www.joyusing.com/download-Visualizer.html>
Choose the software.

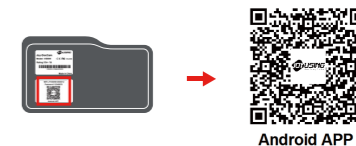


Software on Apple Store

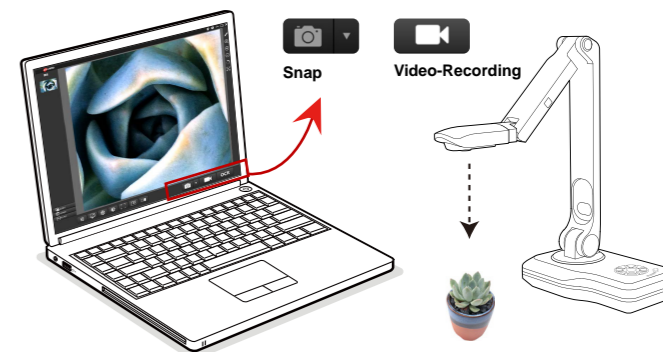
Mac system can directly search for **Doccamera** in the application store to download the software.

Scan the QR Code

Scan the QR code at the bottom of the product.



5 Instant Experience (Video&Image)



<Remark> More information, please visit our user manual.